

## 40 Manor Place, Bridge Street, Walton-On-Thames, KT12 1AB

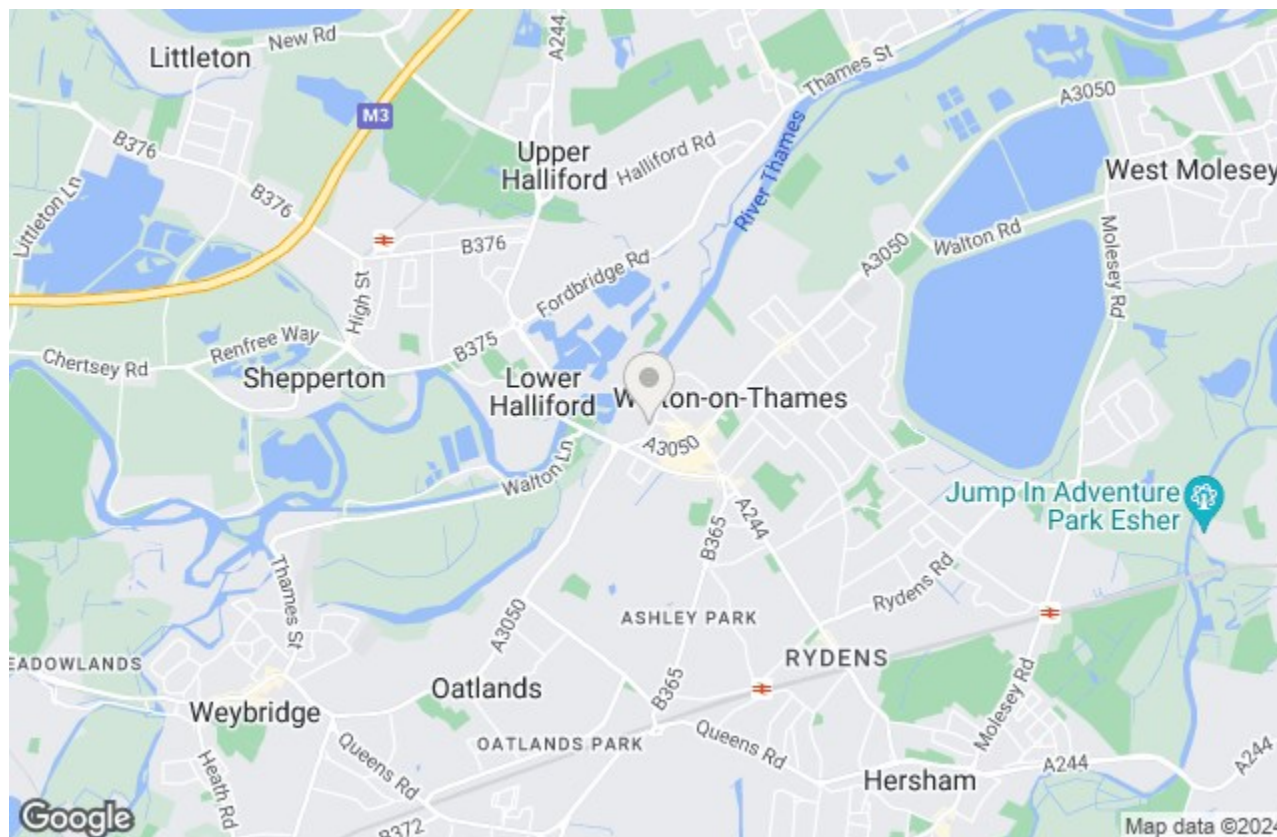
Energy Efficiency Rating		Current	Potential
Very energy efficient - lower running costs			
(92 plus) <b>A</b>			
(81-91) <b>B</b>			
(69-80) <b>C</b>			
(55-68) <b>D</b>			
(39-54) <b>E</b>			
(21-38) <b>F</b>			
(1-20) <b>G</b>			
Not energy efficient - higher running costs			
		<b>78</b>	<b>80</b>
<b>England &amp; Wales</b>	EU Directive 2002/91/EC		

Environmental Impact (CO <sub>2</sub> ) Rating		Current	Potential
Very environmentally friendly - lower CO <sub>2</sub> emissions			
(92 plus) <b>A</b>			
(81-91) <b>B</b>			
(69-80) <b>C</b>			
(55-68) <b>D</b>			
(39-54) <b>E</b>			
(21-38) <b>F</b>			
(1-20) <b>G</b>			
Not environmentally friendly - higher CO <sub>2</sub> emissions			
<b>England &amp; Wales</b>	EU Directive 2002/91/EC		

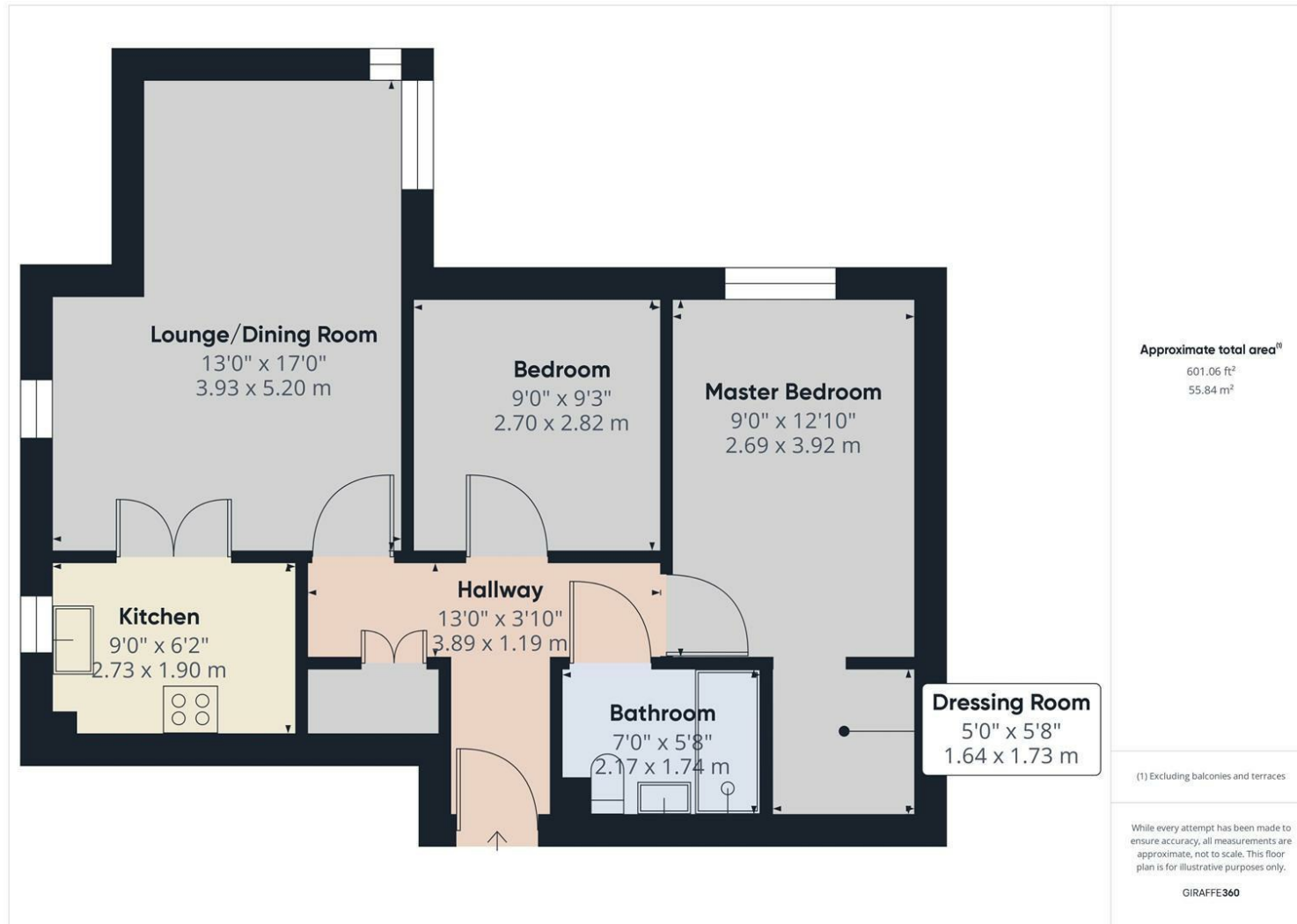


**£240,000 Leasehold**

We are delighted to offer this highly regarded apartment for over 55's and located in the centre of Walton surrounded by the High Street shops and restaurants and with the picturesque river Thames nearby. This second floor apartment is serviced by a lift and also has the benefit of a residents lounge, residents laundry room and concierge. The accommodation briefly includes an entrance hallway with storage, good size through lounge/dining room with archway to the fitted kitchen, master bedroom with archway to dressing room and generous size second bedroom. The shower room includes a large walk in shower, wash hand basin and low level WC. Externally the beautifully kept communal gardens make for the perfect space to relax and enjoy the sunshine with a paved patio and various seating areas all surrounded by mature trees and shrubs. Manor Place is built to a high specification with a scheme manager service and guest bedroom available for visiting family/friends. There is also secure underground parking on a first come first served basis.



# Bridge Street, Walton-On-Thames, KT12 1AB



- TWO BEDROOMS
- MASTER BEDROOM WITH DRESSING ROOM
- SECOND FLOOR WITH LIFT SERVICE
- IN HOUSE MANAGER SERVICE
- CLOSE TO RIVER

- EXCLUSIVE APARTMENTS FOR OVER 55's
- MODERN FITTED KITCHEN
- COMMUNAL RESIDENTS LOUNGE
- CLOSE TO TOWN CENTRE
- POPULAR RESIDENTIAL APARTMENTS

This plan is a representation of the property and measurements, where given, are approximate. None of the fixtures and fittings have been tested by us. These details are thought to be materially correct but we cannot guarantee there are no error and emissions and they do not form part of any contract

